

Module Features

- Easily connects to the back of IntelliPAP Standard and IntelliPAP Auto
- Simple data transfer from module to software via data card
- Data Scope
 - 3 years of usage data
 - 120 nights of detailed therapy data
 - 72 hours of oximetry data (optional)
- Oximetry port included for Nonin XPOD Oximeter
- 3-year limited warranty



Software System Requirements:

Operating System:	Microsoft® Windows XP™ service pack 2 or higher OR Microsoft® Windows Vista™ service pack 1 or higher
Adobe® Reader®	6.0 or greater
RAM:	512MB
Hard Drive Free Space:	150MB
Hardware:	SD Data card reader supporting FAT16 file format (included) OR USB port for auxiliary card reader

Parts and Accessories

DEVILBISS PART #	PRODUCT DESCRIPTION	DEVILBISS PART #	PRODUCT DESCRIPTION
DV5SS	SmartLink Setup Kit (Includes Software, Instruction Guide, Card Reader & Data Card)	A-DV5M	SmartLink Patient Instruction Guide
DV5FC-1	SmartLink Data Card	DV5M-697	Nonin XPOD Oximeter Kit (Includes Oximeter cable, reusable flex sensor and 25 disposable FlexiWraps®)
DV5FC-10	SmartLink Data Card 10-pack	9054D-699	Nonin nVision Software
DV5M	SmartLink Module	8000AA	Oximeter Finger Clip Sensor
DV5CR	SmartLink Card Reader	8000Q	Oximeter Ear Clip Sensor
DV51D-694	SmartLink USB Extension Cable		



SmartLink Module DV5M on DeVilbiss IntelliPAP with Humidifier

SmartLink™ Patient Therapy Management System

The Smart Way to Link to a Patient's CPAP Therapy

The **DeVilbiss SmartLink** Therapy Management System **provides a simple means to remotely monitor patient CPAP usage** and evaluate the effectiveness of CPAP therapy.

This incredibly **easy to use system** allows clinicians or providers to not only monitor parameters of a patient's CPAP therapy, but also adjust the parameters.

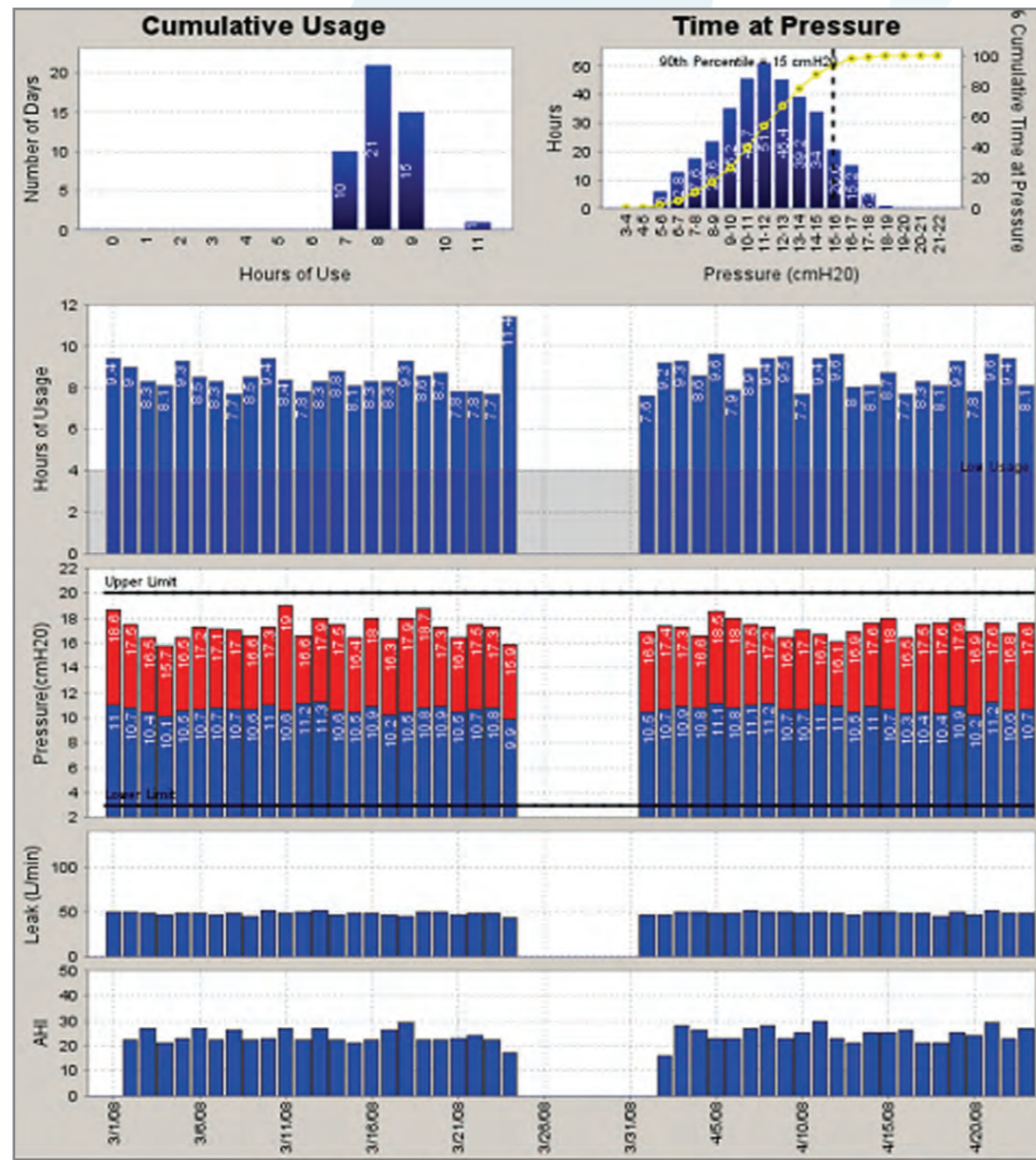
Simply attach the discrete SmartLink module to the back of any IntelliPAP unit. **The module will automatically log various parameters of patient usage data.** That data is then deciphered via simple-to-use SmartLink desktop software installed on the provider or clinician's computer. **Once the patient monitoring period is complete, the module can be placed on another IntelliPAP unit.**

Software Features

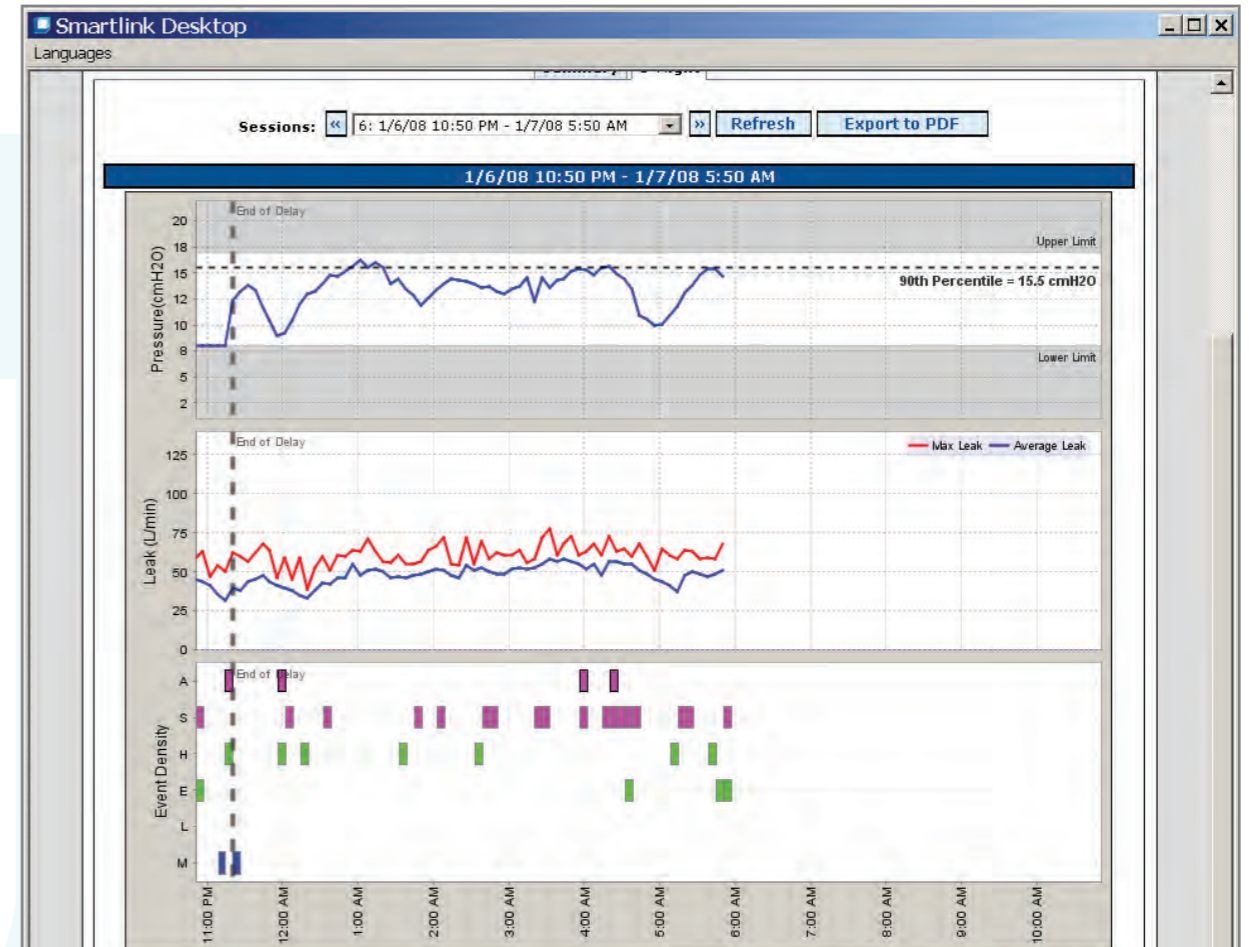
- Intuitive and easy-to-use
- Easily track patients and their equipment
- User-defined study durations
- Easily exports reports to PDF format
- Allows remote setting adjustment
- Automatically logs all activity to patient record within the software
- Provides oximetry data (when optional oximeter is used) and allows for export to the Nonin® nVision® software for full analysis
- Efficient workflow for setting up new patients, new devices and managing patient studies
- Auto-detects new study data on data card and imports easily into software

IntelliPAP AutoAdjust Summary Report Using SmartLink System

- One page shows all data for entire date range
- Day defined as noon of present day to noon of next day
- Export to PDF creates a two page report including coversheet
- Reported parameters
 - # days in date range
 - # days with any usage
 - # days with usage above low use threshold
 - % days in date range above low use threshold
 - Average hours use/day for days with any usage
 - Standard deviation of hours use/day for days with any usage
- Usage Histogram
 - Shows number days used vs. hours of use/day
- Time at Pressure
 - Blue bars - Hours of use vs. pressure
 - Red line - Cumulative time at pressure
 - 90th or 95th percentile pressure highlighted
 - Time with delay active excluded
- Hours of Usage
 - Summary view - reports hours of use
 - Detail view - shows on/off times
- Pressure
 - Average and maximum pressure
 - Time with delay active excluded
- Leak
 - Average leak in Liters/minute
 - Time with delay active excluded
- AHI
 - Sum of apnea and hypopnea events
 - Time with delay active excluded



IntelliPAP AutoAdjust Single Night Report Using SmartLink System



Events Summary (Delay Mode)			Events Summary (AutoAdjust Mode)		
Time: 0.5 Hours	Mask Leak Time: 0 % of total	EPI: 24 Per Hour	Time: 6.6 Hours	Mask Leak Time: 0 % of total	EPI: 4.7 Per Hour
AHI: 4 Per Hour	Average Pressure: 8 cmH2O	Average Leak: 39.6 L/min	AHI: 1.4 Per Hour	Average Pressure: 13.5 cmH2O	Average Leak: 48.4 L/min
AI: 2 Per Hour	Avg. Est. Tidal Vol.: 576.8 mL	Snores: 8 Events	HI: 0.9 Per Hour	Avg. Est. Tidal Vol.: 751.4 mL	Snores: 158 Events
HI: 2 Per Hour	Avg. Breath Rate: 15 bpm		NRI: 0.2 Per Hour		

Event Density Translation

Label	Color	Marker Threshold Within a 6 minute interval
Apnea	Pink	Any event
Snore	Pink	Three or more events
Hypopnea	Green	Any event
Exhale puff	Green	Six or more events
Leak	Blue	If Leak > 95 L/mi
Mixed/Non-responding	Blue	Any event