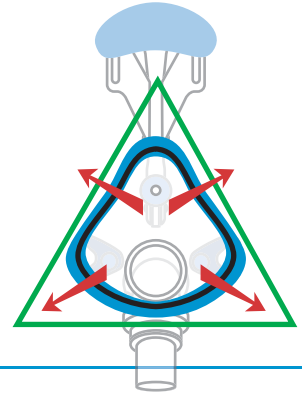
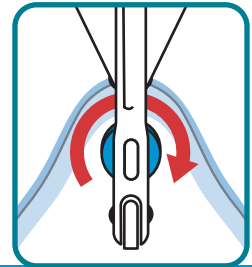


MOJO FITTING TIPS

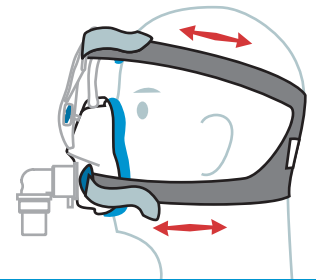
1. The mask shell can be reshaped to follow the contours of the patient's face. If the mask has been shaped previously, return to the original shape by holding the mask with your thumbs inside the shell, parallel, and bend the wire outward until the shell resembles a triangular pear and the sealing surface of the gel is nearly flat.



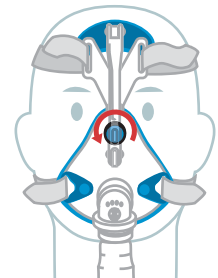
2. Turn the mask around (elbow towards you) and rotate the tensioning screw clockwise as far as it will easily turn. Bend the forehead pad flat.



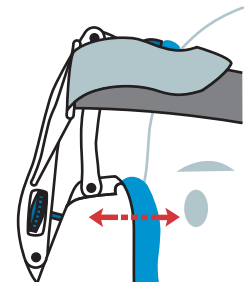
3. Assemble the mask to the headgear, as indicated in product instructions. Put on mask assembly; center the mask on the face, with the top of the gel at the indent on the nose bridge between the eyes, and the bottom at the indent below the lips. Center the headgear on head and assist with strap adjustments; adjust to secure the mask in place, but do not overtighten. Bend the forehead pad to fit against forehead.



4. Connect mask to airway pressure device tubing, and turn unit on. If there are leaks at the bridge, turn the tensioning screw counter clockwise until leaks are gone. This will divert the force of the upper straps, down to the top of the mask shell, and into the bridge.

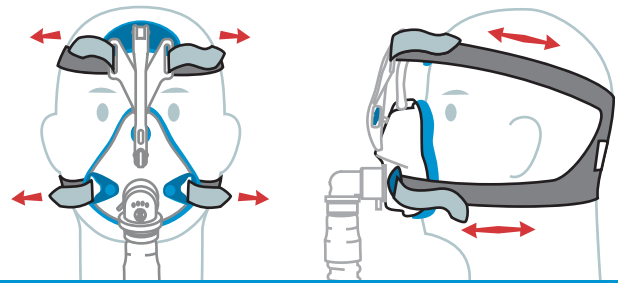


5. If the tensioning screw will no longer turn and there are still leaks at the bridge, turn tensioning screw clockwise to original position; tighten forehead straps; and turn tensioning screw counter clockwise until leaks are gone.

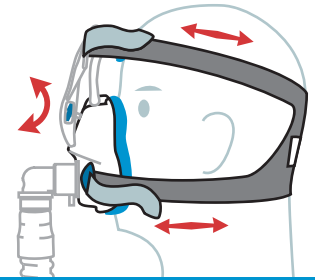


6. Leaks are eliminated by applying moderate pressure along the embedded wire to bend the mask shell to match their facial contours and reduce air leaks. Adjust straps and mask shell as needed.

When bending the mask shell, support the opposite side of the mask so that adjustments only affect a specific part of the shell.

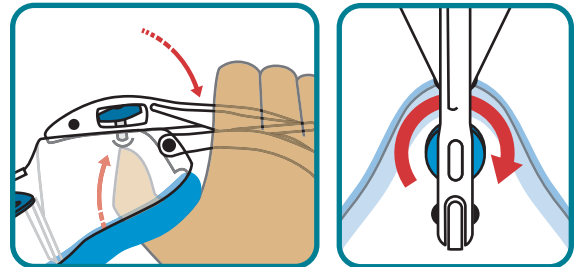


7. If necessary, pull the mask away from face and reset on face; move mask higher or lower; adjust strap lengths or upper strap position through headgear frame.



TROUBLE SHOOTING

If the tensioning screw wheel has unscrewed from its post, it can be re-screwed into place. Hold the mask shell with your thumb inside the shell, pressed against the base of the post; grasp the dual beam element with your fingers, as illustrated, and replace the tensioning screw inside its slot, perpendicular to the post. Turn the screw clockwise until it threads on the post.



Not all Mojo masks feature a retaining clip. If your mask does feature a retaining clip, and the mask elbow has come off the mask: you will need to re-insert the retaining clip between the mask shell and the lip of the elbow assembly. Cup the mask shell in your hands and support the mask elbow and swivel with your fingers. Use your thumbs to press the retaining clip under the lip of the elbow assembly, inside the mask shell. Ensure the clip is secure between the lip of the elbow and the mask shell. If the elbow assembly can rotate without popping out, then the retaining clip is correctly in place.

